

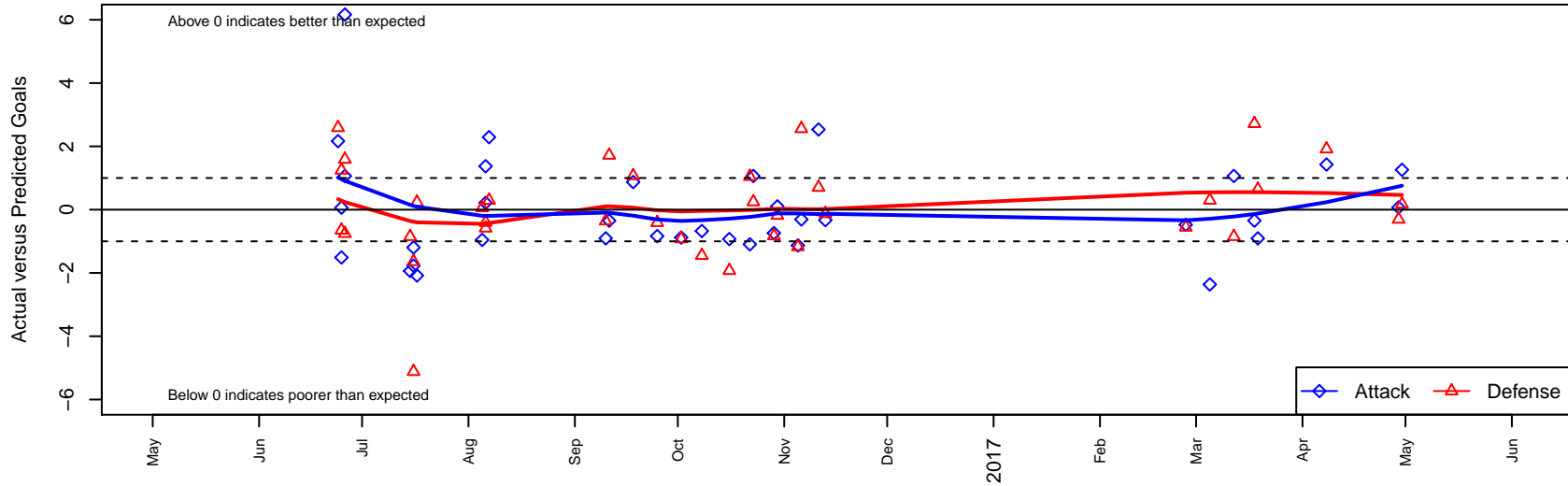
# Westside Timbers Copa TS B03

Westside Timbers  
 Beaverton, OR  
 B03 total strength=988  
 attack=2.64 defense=1.4  
 fall league = PTT B03 Div 1 White  
 spr league = Spr OYS B03 Div 2 Green

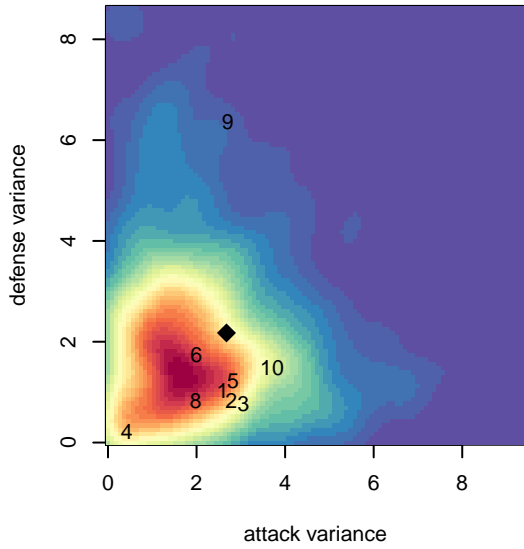
alt names used:  
 WT 03B Copa TS  
 Westside Timbers Copa TS B03  
 Westside Timbers 03B Copa TS  
 Westside Timbers 03B Copa TS  
 Westside Timbers 03B Copa TS

Venues played:  
 2016 Capital Cup BU14 Silver  
 2016 Beaverton Cup BU14 Silver  
 2016 Mt Hood Challenge U14 Silver  
 2016 PTT B03 Division 1 White  
 2016 OYS Presidents Cup B03  
 2016 Spr OYS B03 Division 2 Green

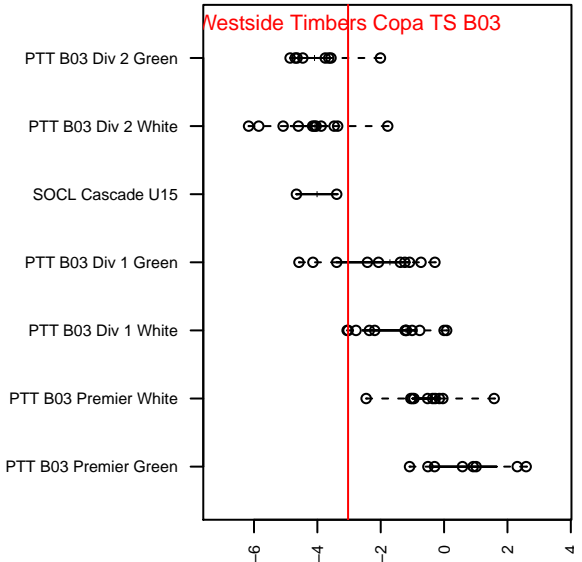
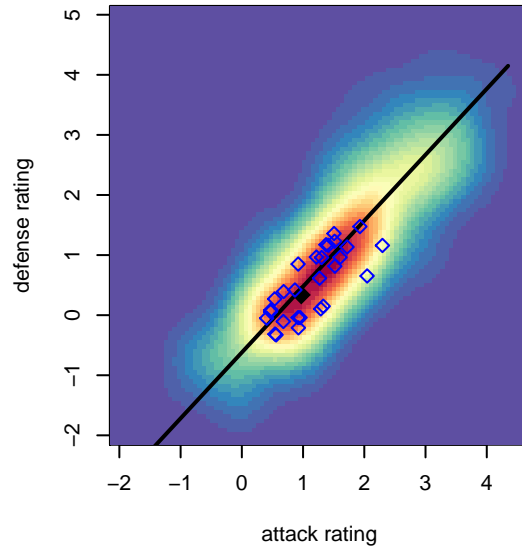
**Westside Timbers Copa TS B03**  
 Dots are actual minus expected GF (blue circles) and GA (red triangles).  
 Blue line is smoothed change in attack strength. Red is smoothed change in defense strength.



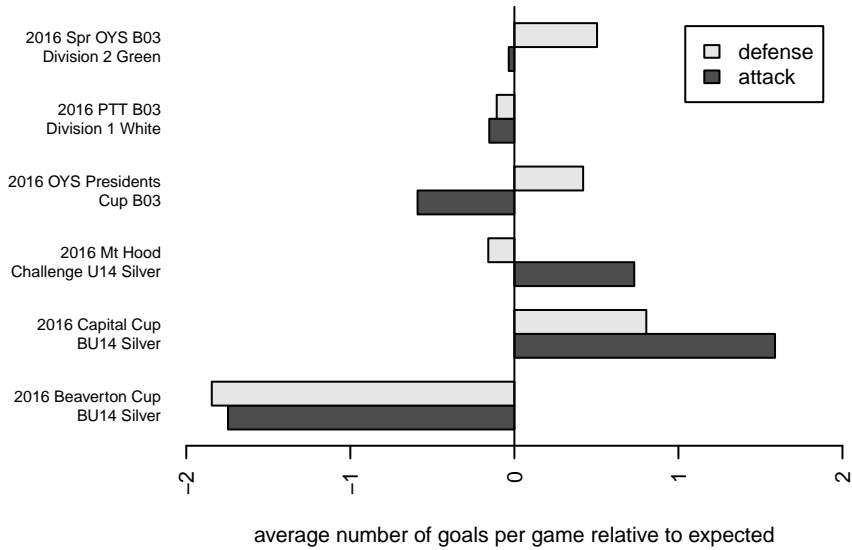
**attack and defense variance (black dot)  
relative to other teams  
and top 10 in region**



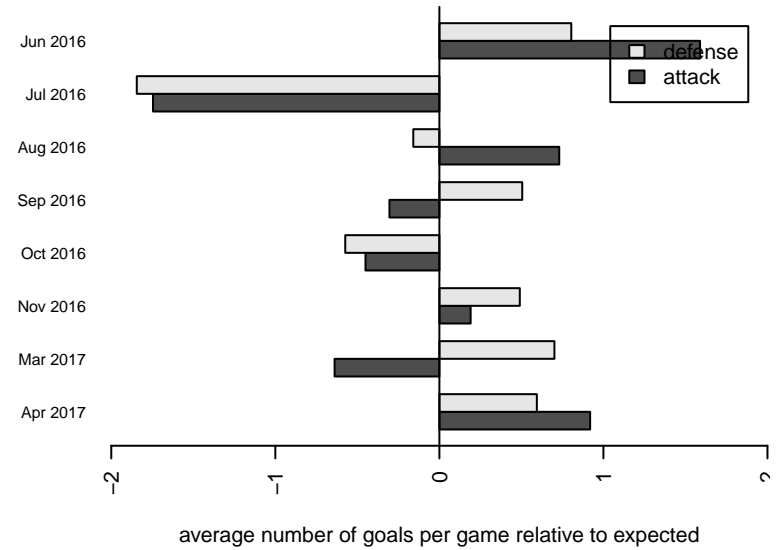
**attack and defense rating  
relative to others at age  
and all opponents in last 13 months**



**Performance relative to 13 month average**



**Performance relative to 13 month average**



| <b>date</b> | <b>home</b>                    |   | <b>away</b>                  |   | <b>venue</b>                      | <b>pred.home</b> | <b>pred.away</b> |
|-------------|--------------------------------|---|------------------------------|---|-----------------------------------|------------------|------------------|
| 2017-04-30  | Westside Timbers Copa TS B03   | 2 | FC Portland Red B03          | 3 | 2016 Spr OYS B03 Division 2 Green | 0.74             | 3.17             |
| 2017-04-29  | Washington Timbers White 2 B03 | 3 | Westside Timbers Copa TS B03 | 1 | 2016 Spr OYS B03 Division 2 Green | 2.70             | 0.93             |
| 2017-04-08  | BSC Portland Gold B03          | 0 | Westside Timbers Copa TS B03 | 4 | 2016 Spr OYS B03 Division 2 Green | 1.92             | 2.57             |
| 2017-03-19  | Westside Timbers Copa TS B03   | 1 | WUSC White B03               | 1 | 2016 Spr OYS B03 Division 2 Green | 1.91             | 1.64             |
| 2017-03-18  | PCU White B03                  | 0 | Westside Timbers Copa TS B03 | 2 | 2016 Spr OYS B03 Division 2 Green | 2.72             | 2.35             |
| 2017-03-12  | Westside Timbers Copa TS B03   | 3 | CUSC Red B03                 | 2 | 2016 Spr OYS B03 Division 2 Green | 1.94             | 1.15             |
| 2017-03-05  | Pacific FC Revolution B03      | 1 | Westside Timbers Copa TS B03 | 0 | 2016 Spr OYS B03 Division 2 Green | 1.30             | 2.36             |
| 2017-02-26  | Westside Timbers Copa TS B03   | 2 | River Plate SC River B03     | 3 | 2016 Spr OYS B03 Division 2 Green | 2.48             | 2.44             |
| 2016-11-13  | Westside Timbers Copa TS B03   | 2 | CSC Storm Navy B03           | 2 | 2016 OYS Presidents Cup B03       | 2.33             | 1.87             |
| 2016-11-11  | Westside Timbers Copa TS B03   | 4 | 4-H PSG B03                  | 5 | 2016 PTT B03 Division 1 White     | 1.47             | 5.70             |
| 2016-11-06  | Capital FC Timbers White B03   | 0 | Westside Timbers Copa TS B03 | 2 | 2016 OYS Presidents Cup B03       | 2.56             | 2.31             |
| 2016-11-05  | PCU Black 1 B03                | 5 | Westside Timbers Copa TS B03 | 0 | 2016 OYS Presidents Cup B03       | 3.83             | 1.13             |
| 2016-10-30  | Westside Timbers Copa TS B03   | 1 | GPS Oregon B03               | 3 | 2016 PTT B03 Division 1 White     | 0.90             | 2.82             |
| 2016-10-29  | FC Portland Red B03            | 4 | Westside Timbers Copa TS B03 | 0 | 2016 PTT B03 Division 1 White     | 3.17             | 0.74             |
| 2016-10-23  | Westside Timbers Copa TS B03   | 2 | Capital FC Timbers Black B03 | 3 | 2016 PTT B03 Division 1 White     | 0.94             | 3.25             |
| 2016-10-22  | FC West Mercury B03            | 3 | Westside Timbers Copa TS B03 | 0 | 2016 PTT B03 Division 1 White     | 4.05             | 1.09             |
| 2016-10-16  | Pacific FC United B03          | 5 | Westside Timbers Copa TS B03 | 0 | 2016 PTT B03 Division 1 White     | 3.08             | 0.93             |
| 2016-10-08  | Southside SC Azul B03          | 7 | Westside Timbers Copa TS B03 | 0 | 2016 PTT B03 Division 1 White     | 5.55             | 0.67             |
| 2016-10-02  | Salem Chelsea B03              | 8 | Westside Timbers Copa TS B03 | 0 | 2016 PTT B03 Division 1 White     | 7.08             | 0.88             |
| 2016-09-25  | Academia Leon B03              | 3 | Westside Timbers Copa TS B03 | 1 | 2016 PTT B03 Division 1 White     | 2.59             | 1.84             |
| 2016-09-18  | Westside Timbers Copa TS B03   | 2 | NEU Blue B03                 | 1 | 2016 PTT B03 Division 1 White     | 1.13             | 2.07             |
| 2016-09-11  | Westside Timbers Copa TS B03   | 2 | PCU White B03                | 1 | 2016 PTT B03 Division 1 White     | 2.35             | 2.72             |
| 2016-09-10  | Westside Timbers Copa TS B03   | 1 | WUSC White B03               | 2 | 2016 PTT B03 Division 1 White     | 1.91             | 1.64             |
| 2016-08-07  | Highline Premier Heat Blue B03 | 1 | Westside Timbers Copa TS B03 | 5 | 2016 Mt Hood Challenge U14 Silver | 1.29             | 2.71             |
| 2016-08-06  | Westside Timbers Copa TS B03   | 5 | Bend FC Timbers White B03    | 2 | 2016 Mt Hood Challenge U14 Silver | 3.63             | 1.59             |
| 2016-08-06  | RVSC Timbers Red B03           | 4 | Westside Timbers Copa TS B03 | 1 | 2016 Mt Hood Challenge U14 Silver | 3.42             | 0.78             |
| 2016-08-05  | 3 Rivers Black B03             | 4 | Westside Timbers Copa TS B03 | 0 | 2016 Mt Hood Challenge U14 Silver | 4.06             | 0.96             |
| 2016-07-17  | Westside Timbers Copa TS B03   | 1 | SESC Lightning B03           | 2 | 2016 Beaverton Cup BU14 Silver    | 3.08             | 2.23             |

| <b>date</b> | <b>home</b>                  |   | <b>away</b>                  |   | <b>venue</b>                   | <b>pred.home</b> | <b>pred.away</b> |
|-------------|------------------------------|---|------------------------------|---|--------------------------------|------------------|------------------|
| 2016-07-16  | Southside SC Blanco B03      | 7 | Westside Timbers Copa TS B03 | 1 | 2016 Beaverton Cup BU14 Silver | 1.88             | 2.19             |
| 2016-07-16  | Westside Timbers Copa TS B03 | 2 | PCU Falcons B03              | 3 | 2016 Beaverton Cup BU14 Silver | 3.77             | 1.36             |
| 2016-07-15  | CUSC Red B03                 | 2 | Westside Timbers Copa TS B03 | 0 | 2016 Beaverton Cup BU14 Silver | 1.15             | 1.94             |
| 2016-06-26  | Westside Timbers Copa TS B03 | 8 | Academia Leon B03            | 1 | 2016 Capital Cup BU14 Silver   | 1.84             | 2.59             |
| 2016-06-26  | Westside Timbers Copa TS B03 | 2 | Capital FC Timbers Black B03 | 4 | 2016 Capital Cup BU14 Silver   | 0.94             | 3.25             |
| 2016-06-25  | Westside Timbers Copa TS B03 | 1 | Capital FC Timbers Black B03 | 2 | 2016 Capital Cup BU14 Silver   | 0.94             | 3.25             |
| 2016-06-25  | Blackhills FC Red B03        | 3 | Westside Timbers Copa TS B03 | 1 | 2016 Capital Cup BU14 Silver   | 2.35             | 2.51             |
| 2016-06-24  | Academia Leon B03            | 0 | Westside Timbers Copa TS B03 | 4 | 2016 Capital Cup BU14 Silver   | 2.59             | 1.84             |